

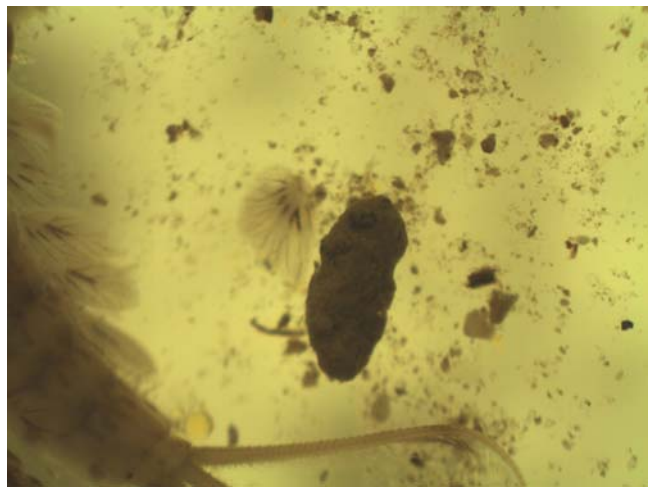
**Two Streams Macroinvertebrate Sample
Poke 2 at Fearrington property off of Morris Road
Date Sample Taken: April 4, 2008**

June 2, 2008

(Notes by all IDers – Neville, Betsy, Catherine, & Jeannie)

1. We found lots of the following mayfly in the stream bank sample. One was also found in the traveling kick and the leaf pack. We IDied it as a Siphonuridae based on it double heart shaped gills, long slender claws, short antennae, and very shape pines on the lower abdomen, and hairy tails.

In *Aquatic Entomology* by McCafferty (p. 100) they describe the habitat preference for Siphonuridae as “various littoral areas of lentic waters, small streams and springs, and sandy-bottomed rivers” which very much matches the sandy bottom condition of Pokeberry Creek at Poke 2. Also McCafferty goes on to say that the “Larvae, although benthic, are generally excellent swimmers and sometimes may be seen swimming intermittently in clear waters.” We saw many of these mayflies swimming in the grasses along the stream bank when sampling this site.



2.



The above specimen was believed to be a member of the Scurtidae family. Interesting and distinguishing features include very long antennae, dimpled patterns on the dorsal plates, and long legs. This specimen was very small, and hard to identify, so it would be worthwhile to have this checked by Dave.

3. Limnephilidae (Anabolia sp?) from LP. See prosternal horn. Also has lateral fringe. Two specimens (compare cases-) left and right specimens.



4.



4. Unknown beetle larvae found in the Leaf Pack. We took 18 pictures of this fellow in an attempt to ID him. We tried keying him out with the beetle larvae key in the new Merritt and Cummins. In an attempt to get a clearer view of the labrum we dissected the head. We thought he might be a Hydrophilidae.



5. The IDied the critter below as a Chrysomelidae. We are not at all certain about this ID. We think this is an aquatic critter, but some Chrysomelidae are terrestrial.



6. Just a curiosity – caddishfly pupa.

